

X-RAY DOORS

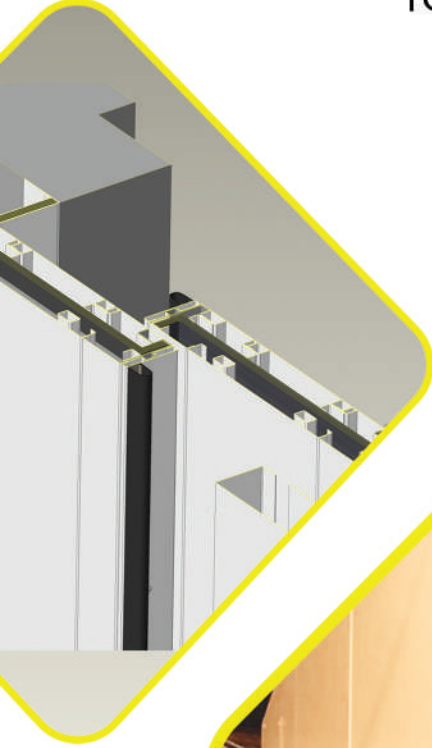
RADIATION SHIELDED SYSTEMS



www.x-raydoors.com
sales@x-raydoors.com
office@x-raydoors.com



Telescopic door
radiation-shielded

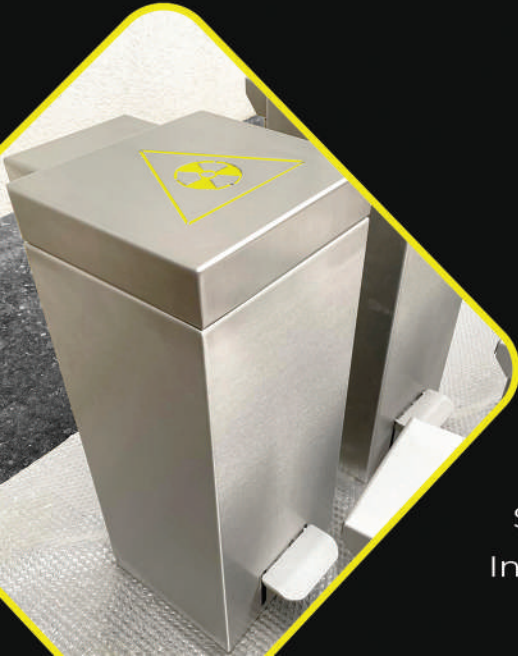


Radiation-shielded doors for linear accelerator bunkers (sliding, swing, telescopic)

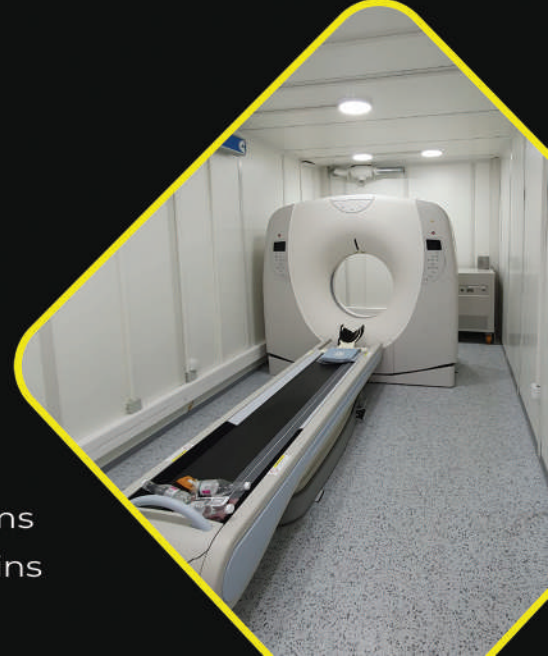
Swing door
radiation-shielded



Radiation-shielded
waste container



Mobile container
for CT scan



Shielding of the bunkers & rooms
Industrial radiation-shielded cabins



video

The first step in making the door is a calculation of an authorized physicist who sets the door protection requirements.

X-RAY DOORS
RADIATION SHIELDED SYSTEMS



Sliding radiation-shielded door

The door can be overlapped on three or four sides. Sliding radiation-shielded doors are divided into regular sliding and telescopic sliding doors.



video

Ceiling set on the door (plate)



The external side

Floor overlap system (optional)

For maximum radiation protection, we use a floor overlap system.



Airflow system (optional)

The airflow system prevents the egress of the contaminated air outside the bunker.



Manual opening using UPS system

In the case of a power outage, the door can be opened using the UPS system.



Manual opening using chain

If the door needs to be opened manually, this can be done using the system located at the door motor.



Flatscan sensors & sensor profiles

Flatscan sensors and sensor profiles provides two levels of safety.



Manual opening using handle (optional)

The addition of opening the door from the other side.





Swing doors are most commonly used when there is not enough space for sliding doors.



www.x-raydoors.com
office@x-raydoors.com
sales@x-raydoors.com



Swing radiation-shielded door



Electro mechanical drive

The drive is located on the axis of the hinge rotation, saving space above the door.



Manual opening

We can offer two types of manual emergency openings, which depends of the opening type.



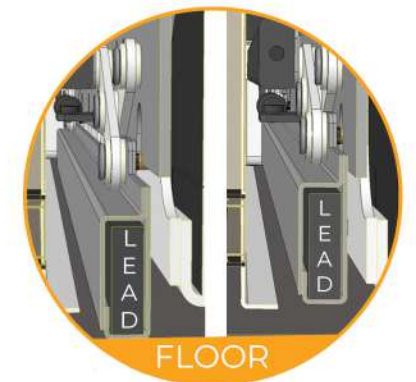
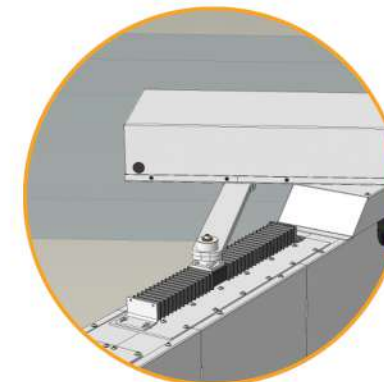
Hydraulic drive

If we have enough space above the door, we can use hydraulic motor with a lever. Unlocking the engine with a key, opening the door by hand.



Falling threshold (optional)

The system with falling threshold is used to minimize the gap between the door leaf and the ground.



Telescopic radiation-shielded door



video

Telescopic radiation-shielded door coalesces the unique utilization of the amalgamated systems with two door panels, the utilization of security and safety systems, and several ways for manual opening, additionally with the UPS system; with an elegant and great benefit for the spaces that require a wide opening but are constrained with space.



www.x-raydoors.com
office@x-raydoors.com
sales@x-raydoors.com

Radiation-shielded waste container



Our waste radiation-protected waste containers are made with a unique design, using a system for easier opening, as well as controlled and slow closing; the mechanism for leveling; and with a lead sheet between two layers of stainless steel.

- dimensions by request
- radiation-shielding by request



video

MobiScan House (installation of the CT scanner)



The radiation-shielded MobiScan House is designed for radiation-protection while identifying disease or injury within various regions of the body, with the CT scanner - outside the hospital, making this kind of medical service easier, more accessible, and more dynamic.



video



www.x-raydoors.com
office@x-raydoors.com
sales@x-raydoors.com

X-RAY DOORS

RADIATION SHIELDED SYSTEMS



REFAFLEX D.O.O.
Dunajska cesta 136
Ljubljana, Slovenia

REFAFLEX D.O.O.
Bulevar Zorana Djindjica 88
Belgrade, Serbia

www.x-raydoors.com
sales@x-raydoors.com



www.x-raydoors.com
office@x-raydoors.com